

Environment Statistics Country Snapshot: United States

United States



Land

| | | Year |
|--|-------------|------|
| Total surface area (sq km): | 9,629,091 | 2005 |
| Agricultural land (sq km): | 4,147,780 | 2005 |
| Arable lands (% agri. land): | 42.1 | 2005 |
| Permanent crops (% agri. land): | 0.7 | 2005 |
| Permanent pasture (% agri. land): | 57.3 | 2005 |
| Change in agricultural land area since 1990 (%): | -3.5 | 2005 |
| Pesticide use (tonnes): | 428,189.0 | 1997 |
| Fertilizer use (1000 t): | 19,298.5 | 2002 |
| Forest area (sq km): | 3,030,890.0 | 2005 |
| Change in forest area since 1990 (%): | 1.0 | 2005 |

Biodiversity

| | | |
|--|-----------|------|
| Percentage of surface area protected for biodiversity (%): | 23.2 | 2005 |
| Number of threatened species: | 1,178 | 2006 |
| Fish catch (tonnes): | 4,959,826 | 2004 |
| Change in fish catch from previous year (%): | 0.4 | 2004 |

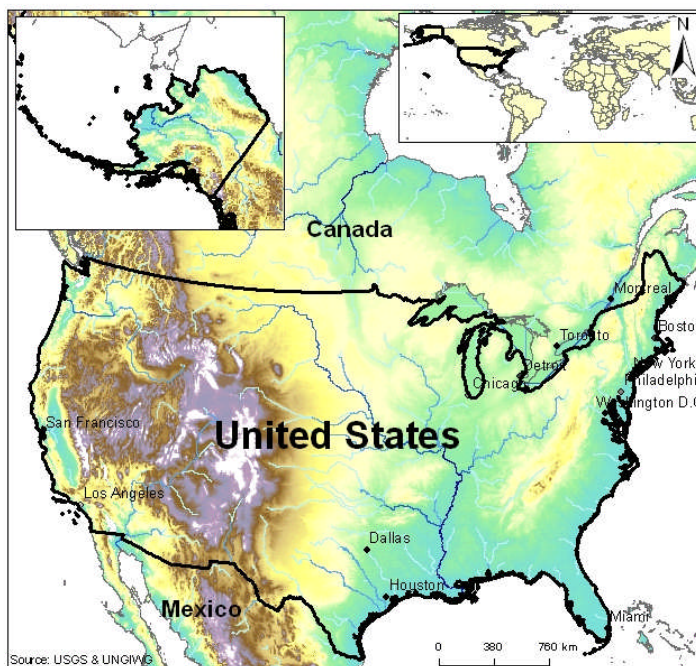
Energy

| | | |
|--|-----------|------|
| Energy use (1000 t oil eq.): | 2,051,914 | 2004 |
| Energy use (kg oil eq./capita): | 6,980 | 2004 |
| Energy intensity (kg oil eq) per \$1,000 GDP | 222 | 2003 |
| Renewable electricity production (%) | 7.1 | 2004 |
| Motor vehicles (1000) | 229,620 | 2002 |

Air and climate

Emissions of:

| | | |
|--|----------|------|
| SO ₂ (1000 t): | 12,469.2 | 2002 |
| SO ₂ (kg/capita): | 42.8 | 2002 |
| NO _x (1000 t): | 19,043.2 | 2002 |
| NO _x (kg/capita): | 65.4 | 2002 |
| CO ₂ (million tonnes): | 5,841.5 | 2003 |
| CO ₂ (tonnes/capita): | 20.0 | 2003 |
| GHG (million tonnes CO ₂ eq): | 7,067.6 | 2004 |
| GHG (tonnes CO ₂ eq. per capita): | 23.7 | 2004 |
| Emissions of: ozone-depleting CFCs (ODP tonnes): | 1,153.6 | 2004 |



Economy

| | | Year |
|---|------------|------|
| GDP (million \$US): | 11,713,000 | 2004 |
| GDP growth rate from previous year (%): | 3.0 | 2005 |
| GDP per capita (\$US): | 39,650 | 2004 |
| % GDP agriculture: | 1 | 2004 |
| % GDP mining, manufacturing: | 17 | 2004 |
| % GDP other: | 82 | 2004 |

Population

| | | |
|--|---------|------|
| Population (1000): | 298,213 | 2005 |
| Population growth rate from previous year (%): | 1 | 2005 |

Water and sanitation

| | | |
|---|------------|------|
| Longterm average renewable freshwater resources (million m ³ /yr): | 2,478,000 | 2005 |
| Urban population with access to improved water source (%): | 100 | 2004 |
| Rural population with access to improved water source (%): | 100 | 2004 |
| Urban population with access to improved sanitation (%): | 100 | 2004 |
| Rural population with access to improved sanitation (%): | 100 | 2004 |
| Population served by municipal waste collection (%): | 100 | 2005 |
| Municipal waste collected (1000 t): | 222,863 | 2005 |
| Hazardous waste generated (tonnes): | 34,788,408 | 2005 |